

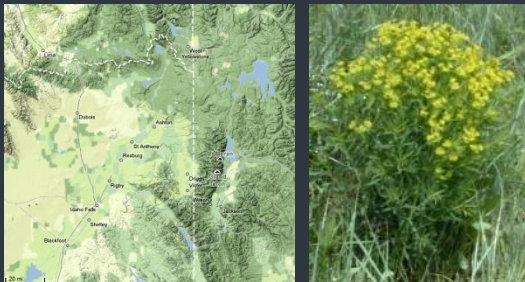


Volunteer to Help

Eastern Idaho is too large for a few county employees and government agencies to control a widespread noxious weed. We need your help. If you can collect insects from local insectaries, volunteer at a cooperative weed management spray day, or even just teach others in your own neighborhood, you can aid in protecting our unique Idaho terrain.

Holding the Line was created to help prevent the further spread of Leafy Spurge.

It is a multi-state initiative that began in Eastern Idaho, and will eventually cover parts of Southwest Montana and Northwest Wyoming. The initiative hopes to encourage land owners to take action on their land, and the land around them. We urge everyone to please be mindful not to spread noxious weeds and to protect our valuable resources.



For more information about Leafy spurge and Cooperative Weed Management Areas visit www.hcountryred.org/CWMA.htm

Project Funded by:



Contact Us

Noxious Weed Superintendants

Bingham County
Paul Muirbrook
208.785.8066

Bonneville County
Jeffery Pettingill
208.529.1397

Butte County
Brad Gannett
208.527.8595

Clark County
Bo Billman
208.374.5121

Custer County
James Hawkins
208.879.2344

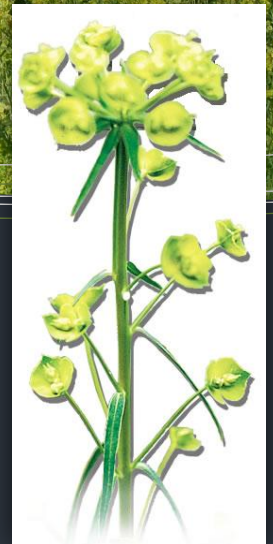
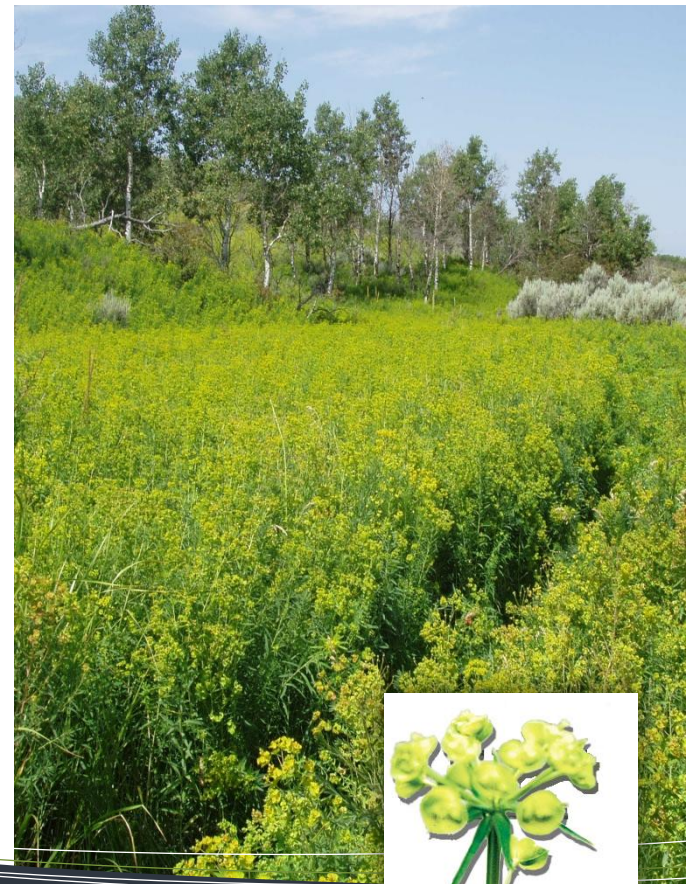
Fremont County
Bryce Fowler
208.624.3102

Lemhi County
Daniel Bertram
208.756.2824

Madison County
Steve Hobley
208.317.6013

Jefferson County
Mitch Whitmill
208.745.9221

Teton County
Ben Eborn
208.354.2961



Holding the Line

Battling Leafy Spurge in Southeast Idaho

Find solutions that work for your land.

No individual method will control leafy spurge in a single treatment.

Diligence and persistence will be required over a number of years to control this weed.

The treatment methods described below will help you design an integrated program that will suit your particular situation.



Leafy spurge (*Euphorbia esula*) is an invasive weed that infests more than five million acres of land in the U.S. This aggressive weed tends to displace all other vegetation in pastures, wildlands, and rangelands. The latex in leafy spurge is a skin irritant that can cause severe dermatitis in humans and grazing animals, and is unpalatable and toxic to cattle and horses. If ingested it causes scours and weakness that may result in the death of the animals. Holding the Line is a campaign to increase awareness and aggressively implement land treatments.

Integrated Weed Management:

- Biological Control
 - Insects
 - Goat/Sheep Grazing
- Chemical Controls
 - Herbicide Treatments

Treatment Information

Insect Control

Four species of *Aphthona* flea beetles and the *Oberea erythrocephala* biological controls have been imported in Southeast Idaho. The root feeding larvae are the primary source of control, and the adults contribute by feeding on foliage and flowers. Control has been highly successful in warm open areas with well-drained soils. Adults of the flea beetles can be collected with a sweep-net in the summer. About 5,000 beetles are used to establish a new site. Following their release, they should be protected from any heavy disturbance.

Goat/Sheep Grazing Control

Leafy Spurge is not toxic to goats and sheep making grazing them an effective tool for controlling leafy spurge. Goat Grazing in Madison County at Cartier Slough and in Fremont County on BLM land has proven favorably successful. Goats will naturally seek out the spurge, and sheep will adapt to leafy spurge if they are forced with temporary corrals. In general, grazing should begin when leafy spurge plants are 4-6 inches tall in the mid- to late spring, and repeated in the late summer.



Herbicide Treatment

Applying herbicides to spurge at the proper timing is essential to control. Some herbicides require early treatments from June to early September, before the plant has seeded. Fall treatments should be used after the first frost with chemical that will be taken down into the extensive root system. Herbicide treatments will take a few years of annual application for impact to occur. Chemicals recommended by the University of Idaho are Tordon and Plateau. 2-4D can also be used in the spring to burn back the plant and help reduce seed. Some herbicides have a restricted use. Remember to contact your county weed superintendant and read the product labels thoroughly.

- Leafy Spurge affects everyone.
- Find a control method that works for your land use.
- Be aware of noxious weeds and spreading them.
- Questions? Call your County Weed Superintendant.



Your County Weed Superintendant wants to help you with weed control problems and questions.

Please feel free to call for weed identifications, clarifications about chemicals, biological control information, or to discuss pasture / range maintenance issues.